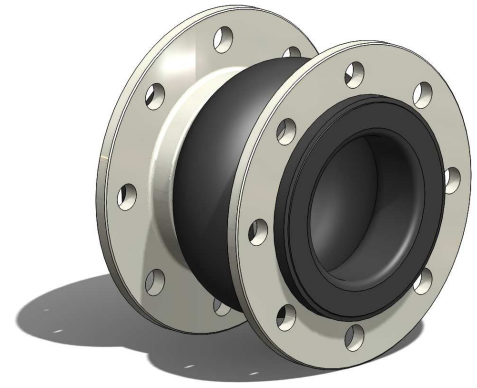
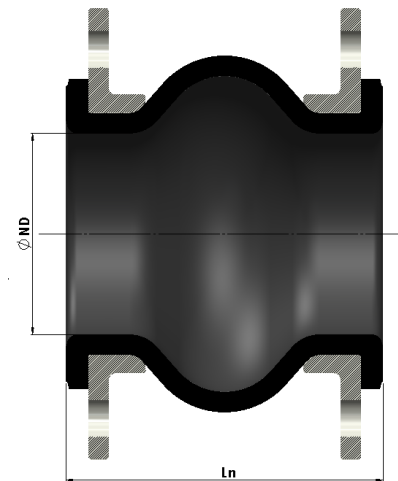


# DILATOFLEX®



## DILATOFLEX® T

Nominal Diameter	Nominal Length	Drilling Standards (1)				Max. W.P. (**) (3),(4)	Steel Ring Required for Vacuum Greater than ...% Vacuum	Max. Permissible Movements (maximum values do not apply simultaneously)				Approximate Weight (steel flanges PN 10/ PN 16)
		PN 10	PN 16	PN20 CL150	WP (bar)			Axial Compression	Elongation	Lateral Shearing	Angular Angle	
	Ln (mm)	PN 10	PN 16	PN20 CL150	WP (bar)		Ln-Lc (mm)	Le-Ln (mm)	R (mm)	α° (degree)		
32	1 1/4	150	X	-	16	100%	30	30	30	20	2,5	
40	1 1/2	150	X	X	16	100%	30	30	30	20	2,6	
50	2	150	X	X	16	100%	30	30	30	20	3,5	
65	2 1/2	150	X	X	16	30%	30	30	30	20	4,6	
80	3	150	X	X	16	30%	30	30	30	20	5,5	
100	4	150	X	X	16	30%	30	30	30	20	6,3	
125	5	150	X	X	16	30%	30	30	30	10	8	
150	6	150	X	X	16	30%	30	30	30	10	10	
200	8	150	X	X	16	30%	30	30	30	10	14,6	



(1) Other drillings available (e.g. PN 6, PN 25, PN40, CL300, B.S.10D, B.S.10E).

Floating flanges in zinc-chromated or stainless steel (316L).

(2) Limited to the nominal pressure of the used drilling standard.

(3) Particular cases:

**DW** grade: W.P. 12 bar at +105 °C max. and W.P. 16 bar at +90 °C max.

**CC** grade: W.P. 10 bar at +110 °C max. and W.P. 16 bar at +90 °C max.

### Inner lining grade and working temperature

**CC** -35 °C  
+90 °C/110 °C

**DW** -25 °C  
+90 °C/105 °C

**EPC** -25 °C  
+95 °C

**AR/CN** -35 °C  
+90 °C

**GZ** -20 °C  
+90 °C

**YP** -25 °C  
+100 °C

**AB** -35 °C  
+100 °C

**TE** -25 °C  
+100 °C

anvis Decize S.A.S.

Usine des Caillots—BP101—F-58302 DECIZE CEDEX

fr.dilatoflex@avs.sumiriko.com — www.dilatoflex.com

anvis